

# GREEN AND BLUE ROOFS FACT SHEET

Green and Blue Roofs provide stormwater capture, detention, and other water-quality related benefits on the roofs of buildings and structures using some or all of the available rooftop area. Green Roofs incorporate vegetation and growing medium, planted over a waterproofing membrane. Green Roofs may also include additional features such as a root barrier and drainage and irrigation systems. Blue Roofs collect and manage water without the use of vegetation through a system of dams and weirs, providing for the detention and slowing of water flows off the roof.

Appropriate for rural, urban and suburban environments. With Green Roofs, vegetation may be difficult to establish due to harsh growing conditions found on rooftops in Jefferson Parish.

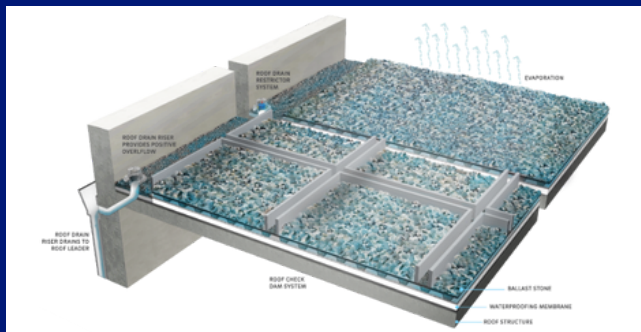
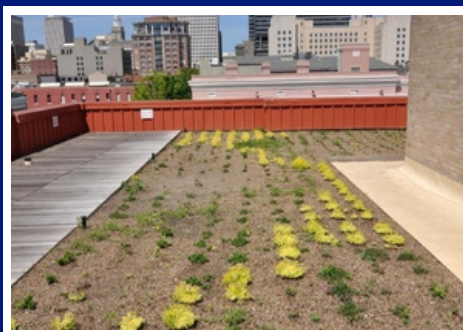


Diagram of Blue Roof,  
source: phila.gov



Green Roof,  
source: uswateralliance.com

## HYDROLOGIC FUNCTION

Provides volume control

## POLLUTANT REMOVAL

Green Roofs can have a positive impact on local air quality

## SOIL SUITABILITY

Soil suitability is non-applicable, however suitability of the structure for such application should be considered

## HABITAT VALUE

Green Roofs provide habitat for insects and certain species of bird

## COMMUNITY VALUE

Provides a pleasing aesthetic to improved structures, and helps reduce the urban heat island effect

Scan here for more information

